



# Application history

**WASABY - Water And Soil  
contamination and  
Awareness on Breast  
cancer risk in Young  
Women**

*Paolo Baili*

*Milan, 19.02.2018*

---

- “Strange” call: an Horizon subject for a Public Health DG Santé call
  - Water & Soil (WS) → Breast cancer (BC)
- How we interpreted the call requirements:
  - Identify areas at risk for BC → use population-based data from cancer registries
  - Promote BC preventive actions for girls in areas at higher risk → not necessarily on W&S contaminants
  - Call for pilot studies → ecological studies on association between WS and BC risk
  - Call in public health → use the example of BC to promote cancer registry activities on spatial analysis

- Increase spatial analysis activities across European CRs
- Improve the use of deprivation indexes in spatial analysis
- Enlarge the utilization of the European Deprivation Index
- Prepare a useful web instrument to promote BC-preventive actions among young girls
- Pilot the connection between databases of WS pollutants and CR databases

## WHAT DO WE EXPECT?

- We do not want to compare CR data among countries (as in EURO CARE, CIVIC, CONCORD, ...)
- We would like to try to compare CR data in a country, but also this request is not mandatory



- So each CR can have different data
- Different methods can be applied

## OUR GOALS

<b>Specific Objective</b>	Identify geographical areas in the European Union with higher breast cancer risk (through spatial analysis of CR data)
<b>Process Indicator(s)</b>	<b>Target</b>
Number of CRs participating in the CR survey (see methods and means)	$\geq 20$
Number of CR countries participating in the survey	$\geq 7$
<b>Output Indicator(s)</b>	<b>Target</b>
Number of CRs sending data for spatial analysis on breast cancer	$\geq 15$
Number of CR countries sending data for spatial analysis on breast cancer	$\geq 6$
<b>Outcome/Impact Indicator(s)</b>	<b>Target</b>
Number of CRs performing spatial analysis for the first time	$\geq 4$
Number of CR countries performing spatial analysis for the first time	$\geq 1$

## OUR GOALS

<b>Specific Objective</b>	Deprivation indexes estimates to be considered in spatial analysis of breast cancer incidence as SES mediator	
<b>Process Indicator(s)</b>		<b>Target</b>
See SO1 process indicators (CR survey will cover also SES topic)		-
<b>Output Indicator(s)</b>		<b>Target</b>
Number of CRs for which deprivation indexes is used in breast cancer spatial analysis		$\geq 15$
Number of CR countries for which deprivation indexes is used in breast cancer spatial analysis		$\geq 6$
Number of countries for which EDI is used in breast cancer spatial analysis		$\geq 5$
<b>Outcome/Impact Indicator(s)</b>		<b>Target</b>
Number of CRs using deprivation indexes for the first time		$\geq 4$
Number of CR countries using EDI for the first time		$\geq 2$

## OUR GOALS

<b>Specific Objective</b>	Review the evidence of polluting agents and their impact on breast cancer	
<b>Process Indicator(s)</b>		<b>Target</b>
Number of published scientific articles considered		$\geq 50$
<b>Output Indicator(s)</b>		<b>Target</b>
Number of water/soil pollutants studied in relation with breast cancer		$\geq 15$
<b>Outcome/Impact Indicator(s)</b>		<b>Target</b>
Number of reports on literature review		$\geq 1$

## OUR GOALS

<b>Specific Objective</b>	Environmental study on correlation between soil and water contamination and breast cancer risk	
<b>Process Indicator(s)</b>		<b>Target</b>
Number of European databases with available data on water/soil pollutants		$\geq 2$
Number of national databases with available data on water/soil pollutants		$\geq 3$
Number of pollutant indicators available in different countries		$\geq 5$
<b>Output Indicator(s)</b>		<b>Target</b>
Number of pollutant indicators available for pilot environmental study		$\geq 1$
<b>Outcome/Impact Indicator(s)</b>		<b>Target</b>
Number of pilot environmental studies performed		$\geq 1$

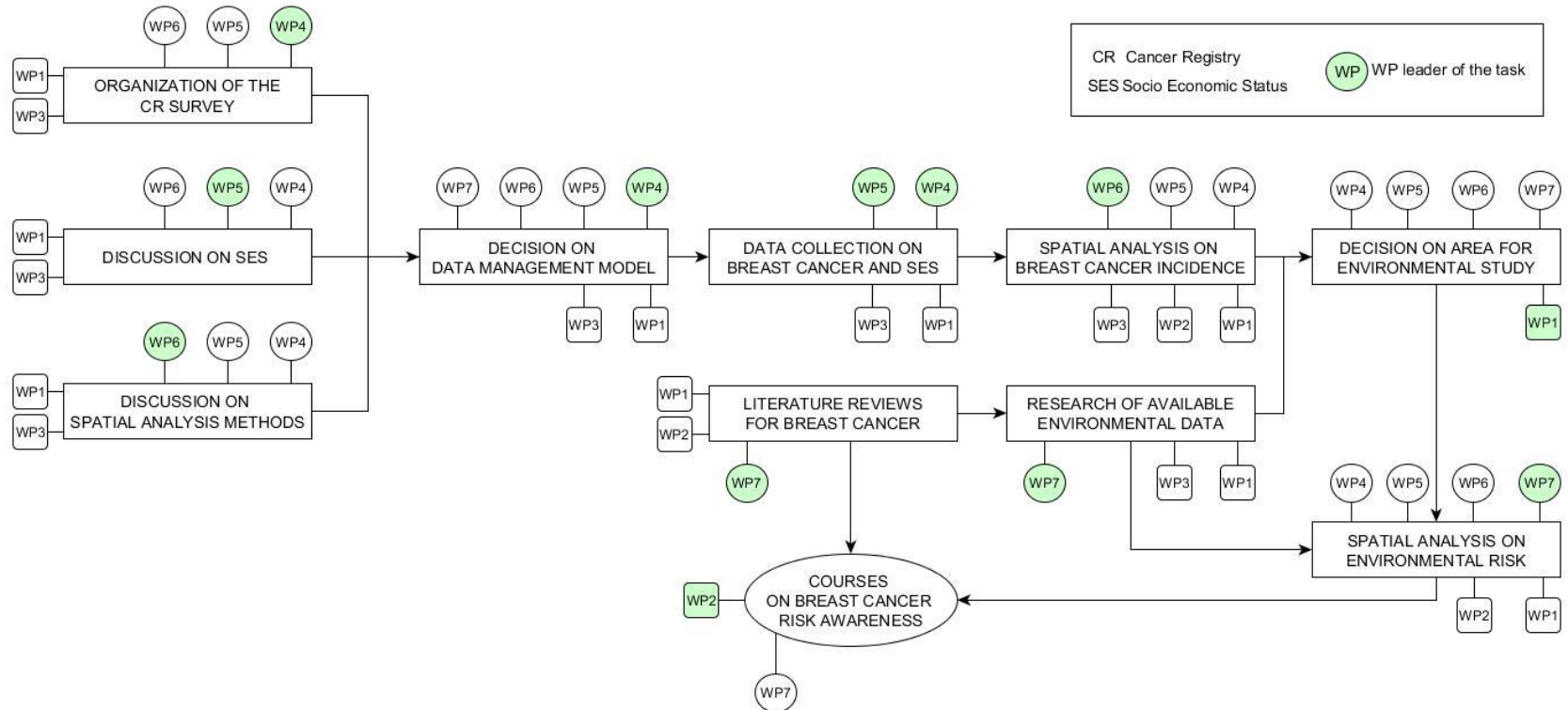


# OUR GOALS

<b>Specific Objective</b>	Design courses on breast cancer risk factors & awareness for young girls/adolescents	
<b>Process Indicator(s)</b>		<b>Target</b>
Number of target countries where promoting the online course		>=5
Number of participants per target country taking part in “alpha test” of online course		>=15
Number of participants per target country taking part in final “beta test” of online course		>=15
Mean age of participants to testing phase		14.5 yrs
<b>Output Indicator(s)</b>		<b>Target</b>
Number of unique visits to online course per target country		>=5,000
Engagement rate of Facebook page (or other social media metric)		>=50%
Mean age of participants to online course		14.5 yrs
<b>Outcome/Impact Indicator(s)</b>		<b>Target</b>
Number of unique visitors completing online course per target country		>=4,000
Number of downloads of additional/complementary information by unique visitor after completion of course per country OR Number of unique visitors following hyperlinks to referral information / partner webpages after completion of course per country		>=1,000

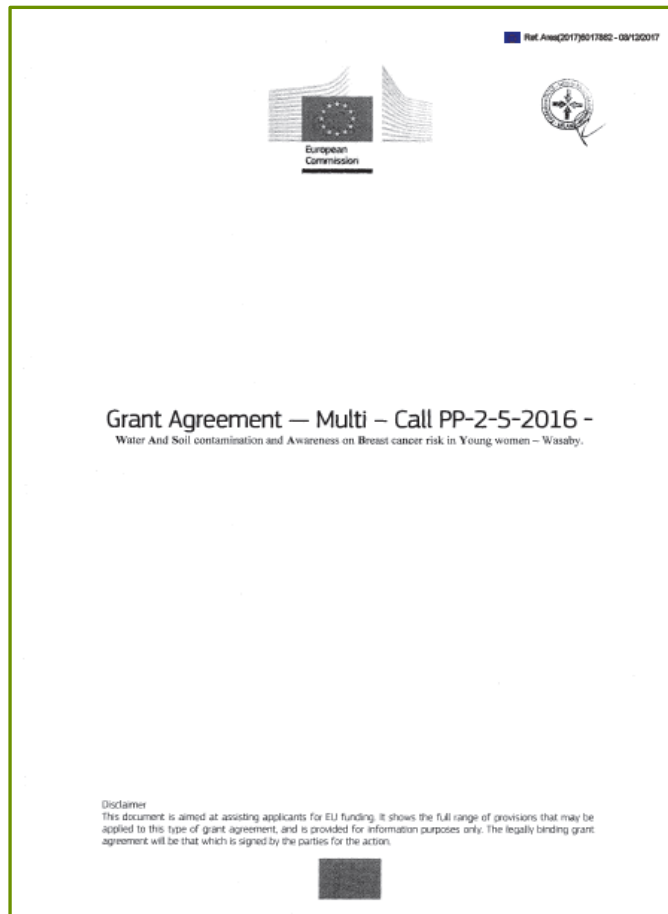
<b>WP</b>	<b>Title</b>	<b>Description</b>
1	Coordination of the project	Actions undertaken to manage the project and to make sure that it is implemented as planned
2	Dissemination of the project	Actions undertaken to ensure that the results and deliverables of the project will be made available to the target groups
3	Evaluation of the project	Actions undertaken to verify if the project is being implemented as planned and reaches the objectives
4	Data management	Actions undertaken to manage and coordinate data for and from WP-5, WP-6 and WP-7
5	Deprivation indexes	Construction of indicators of social and economic deprivation by the smallest geographical areas of countries
6	Methods and analysis	Actions undertaken to design and validate a method for studying and mapping the variation of cancer risk within CRs areas
7	Environmental risk factors & breast cancer	Actions undertaken to study the relation between pollutants contamination and cancer risk

# STRUCTURE









The Grant Agreement was signed in December 2017

36 month duration contract from 1/1/2018

Our 5 Institutes are Associated Partners

The project is the GA Annex1

The grant reimburses 60% of the eligible costs



So in the budget you have to declare 40% of costs covered by other resources (i.e. permanent staff costs)

## Your budget

- The pre-financing were sent from INT to your organisations' accounts on 29.01.2018
- Pre-financing was 50% of the EC funds
- At interim report (M18-20) we could obtain an interim payment according to the direct costs declared in the interim report (if interim costs > pre-financing)
- Balance payment will depend on the final report approval by the EC
- **You have to spend all the EC funds even if they will arrive after the conclusion of the project**



## Article 4.2 of the Grant agreement Budget transfers

The estimated budget breakdown indicated in Annex 2 may be adjusted by transfers of amounts between beneficiaries or between budget categories (or both). **This does not require an amendment** according to Article 39, if the action is implemented as described in Annex 1.

**However**, the beneficiaries may not add costs relating to subcontracts not provided for in Annex 1, unless such additional subcontracts are approved by an amendment or in accordance with Article 10.

## Budget by partner

- Each partner is responsible for own budget
- We will collect budgets of each partner at:
  - Month 18 for interim report
  - Month 30 to check if we have to ask some amendments to the EC
  - Month 36 for the final report
- We will not stress you on the eligibility of costs (during the project) but do not hesitate to write us for any doubts
- We have not prepared any ppt on eligible costs but if you need specification on this topic we can prepare it and send it to you by mail

- Consortium Agreement according to DESCAs models prepared for HORIZON projects
- We received it from our legal office
- Major roles will be assigned to the
  - Steering Committee
  - Management support team
- We would like to include an article on publication policy (afternoon discussion)
- Future steps will be
  - We will send the CA version to our legal office
  - Our legal office will send it to your legal offices to start the negotiation procedures

	Personnel	Other costs (non T&S)
INT	1 full time statistician x maps 1 part time (40%) secretary 1 part time (80%) x environment	14000€ for 2 group meetings 8000€ for CR training 8000€ for data acquisition
SLO	1 full time statistician x maps	3000€ for publication/reports 1200€ laptop
Caen	1 part-time (~10%) engineer 1 part-time (~35%) fellowship	-
ECL	1 part time (~20%) senior officer	17000€ for IT subcontracts 25000€ for material
LUB	1 part time (~5%) scientist	-

The Cancer registries taking part in WP4, 5, 6 and 7 activities will be collaborating partners in WASABY